



AgLanta: Urban Agriculture Atlanta

November 1, 2017  
Student Planning Association  
Tate Davis  
Elizabeth Beak



## Introductions

### Mayor's Office of Resilience

City of Atlanta

<http://www.100resilientcities>.

**Stephanie Stuckey:** Chief Resilience Officer

**Mario Cambardella:** Urban Agriculture Director

**Elizabeth Beak:** Food Systems Planner

+

Many partners...

## Introductions



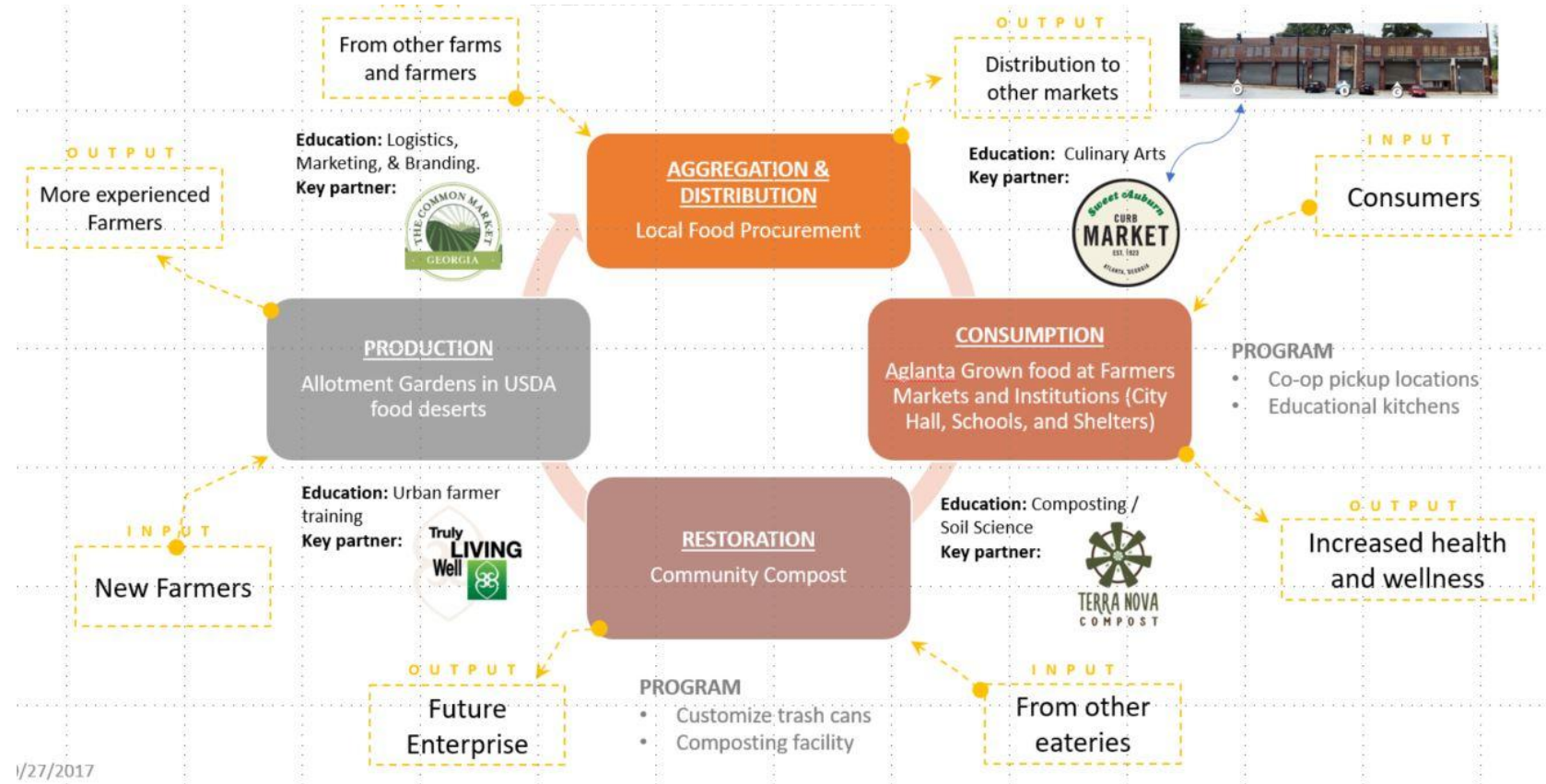
- **Grow** some of your own food at your home, or one of AgLanta's 248 production sites.
- **Purchased a local ingredient or product** at one of AgLanta's 19 Farmers Markets, a CSA, a restaurant, or store this month.
- **Live** within a .5 mile of one of the city's 100 healthy food access points.
- **Live** in a USDA Low-income Low-Access Food Desert area of AgLanta.
- Can **name** a fruit or vegetable that grows well in AgLanta right now? Name a local farm that is helping AgLanta eat?
- Are interested in planning (and living) in communities that are resilient, sustainable, healthy and equitable.

# AGLANTA What: Urban Agriculture Atlanta

## Urban Agriculture:

*“the production, distribution, and marketing of food and other products within the cores of metropolitan areas and their edges” (American Planning Association)*

*“an industry that produces, processes and markets food and fuel, largely in response to the daily demand of consumers within a town, city, or metropolis, on land and water dispersed throughout the urban and peri-urban area, applying intensive production methods, using and reusing urban wastes, to yield a diversity of crop and livestock” ( Smit, et. al, 1996).*



### Why:

- Mayor Kasim Reed & staff set a **goal**: making Atlanta a top-tier city in sustainability, strengthen the local food economy, and **bring healthy food access within a .5 mile to 75% of Atlanta residents by 2020**.

### How:

- (2014) Atlanta's City Council amended the zoning ordinance to include an **Urban Agriculture Ordinance** which defined urban gardens and market gardens as a permitted use, and the conditions by which these food producing landscapes were permitted. (14-O-1092)
- (2015) City hired the first **Urban Agriculture Director** to help the urban agriculture community navigate this new policy and permitting process, and alleviate additional barriers to cultivating an equitable, sustainable and resilient food system.
- (2015-2017) **Listening, analysis, piloting initiatives** (4 P's: Plans, Permits, Policies, Programs)

## AGLANTA - URBAN AGRICULTURE ATLANTA

### OUR INITIATIVES:

#### **URBAN FOOD FOREST AT BROWNS MILL**

[ABOUT THE URBAN FOOD FOREST AT BROWNS MILL](#)

[PHASE 2: COMMUNITY VISION PLAN - REFINED CONCEPT](#)

[PHASE 1: COMMUNITY VISION - CONCEPTS A & B](#)

[COMMUNITY VISION \(PLANNING + DESIGN\) PROCESS](#)

[REQUEST FOR COMMUNITY VISION PLAN](#)

[Q & A FROM RFQ: COMMUNITY VISION PLAN](#)

#### **AGLANTA GROWS-A-LOT**

[ABOUT AGLANTA GROWS-A-LOT](#)

[AGLANTA URBAN GARDENS](#)

[AGLANTA URBAN FARMS](#)

[AGLANTA GROWS-A-LOT DEFINITIONS](#)

[AGLANTA GROWS-A-LOT RESOURCES](#)

[AGLANTA GROWS-A-LOT ADOPTION CALENDAR](#)

#### **TASTE OF AGLANTA 2017**

[2017 RECAP](#)

[IMAGE GALLERY OF TASTE OF AGLANTA 2017](#)

[AGLANTA FORUM 2017](#)

[2017 RECAP WITH PHOTOS](#)

[AGLANTA - URBAN AGRICULTURE ATLANTA](#)

[ABOUT US](#)

# AGLANTA **What:** AgLanta Grows-A-Lot

## WHAT:

Utilization of vacant,  
city-owned properties  
for food production.

**Model: Adopt-A-Lot Programs**  
(Baltimore, Minneapolis, Pittsburgh,  
Milwaukee, Jersey City)



AgLanta: Truly Living Well utilizes urban spaces to increase food access.

## **AGLANTA** Why: AgLanta Grows-A-Lot

Mayor Kasim Reed & staff committed to making Atlanta a top-tier city in sustainability, strengthen our local food economy, and bring healthy food access within a .5 to 75% of Atlanta residents by 2020.

In the community listening sessions (FWA, CCI, Choice Neighborhood, Food Oasis etc.) Atlanta's urban agriculture community expressed that a top barrier is access to land.

Constituents ask the Office of Resilience team: Are city-owned properties available for their urban agriculture project?



## **AGLANTA** How: AgLanta Grows-A-Lot

Worked with City of Atlanta's Department of Enterprise and Asset Management to **identify suitable properties**.

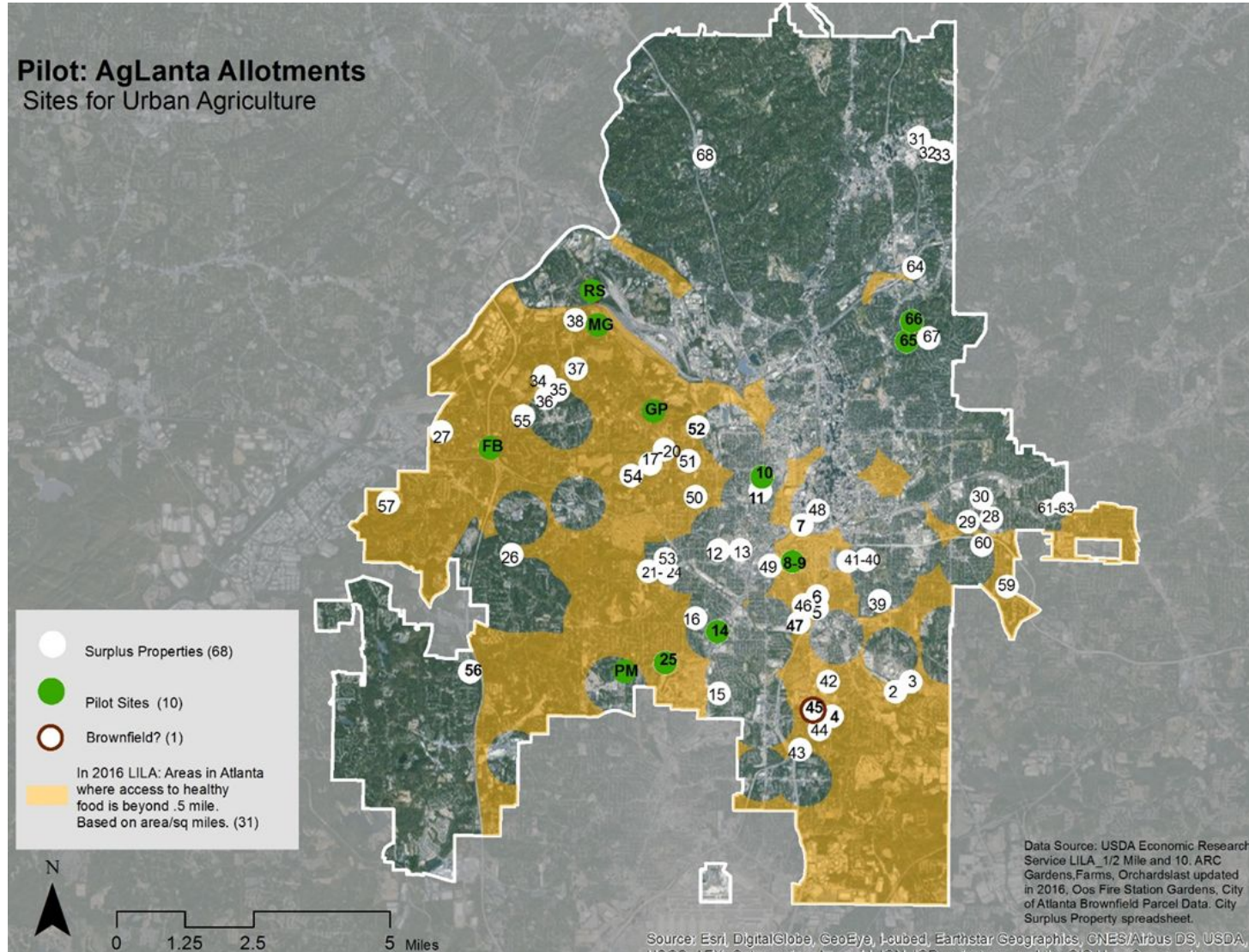
**Reviewed best emerging practices** from municipal adopt-a-lot programs in cities across U.S (Minneapolis, Milwaukee, Cleveland, Baltimore, Jersey City etc.) + drafted recommendations for an AgLanta Grows-A-Lot Program.

**Presented recommendations, learned what CoA requires** (City Legal Dept., Chief Equity Officer, various City Departments) + **got approval to move forward**.

Formed **AgLanta Grows-A-Lot Advisory Committee**: to help OoR create **applicant requirements** + **clear, fair and equitable system**.

**Created a website** – tool for urban g community to adopt-a-lot.

# AGLANTA How: Review Best Emerging Practices + Approval Process



## Analysis

OoR + Dept. of Enterprise and Asset Management reviewed 78 Tier 2 and 3 surplus properties

City started with Tier 2 & 3 surplus properties because least likely to be developed + more secure for farmers.

However, greater start up costs.

6 surplus property sites + 4 energy easements identified

Goal: create a system > test system > improve system + add additional sites.

# AGLANTA How: Review Best Emerging Practices + Approval Process

## ADOPT-A-LOT: EMERGING PRACTICES

CITY	REQUIREMENTS	LIABILITY	SOIL	WATER
<b>MINNEAPOLIS</b> "300 community gardens exist in Minneapolis. 1/4 th are on vacant, City-owned lots"	Clarified on website: <ul style="list-style-type: none"> <li>lots (map): leased vs. open</li> <li>Tiers: lease length (up to 5 years) Can buy some lots.</li> <li>online license applicat. requires :non-profit or neighborhood organ. sponser.</li> <li>Links: zoning, sample site plan, existing gardens to join</li> <li>Comm. Gard preference over commerical gardens</li> <li>lease more \$ if a for profit</li> </ul>	Required: <ul style="list-style-type: none"> <li>Community garden: 1 million</li> <li>Commercial Market Garden: 2 million</li> </ul>	All lots for lease have been soil tested.  Sites with contaminants above established threshold must plant in raised beds.  Minnesota Brownfields - grants for clean up for gardens	Steps clarified to acces& H2O through public works dept: <ul style="list-style-type: none"> <li>fire hydrant permit neighboring property</li> <li>direct hzo hook up using service line</li> </ul> Costs: Hydrant Permit \$50, \$100 deposit, \$3.45 /100 cub. ft. All: metered, regular rates
<b>BALTIMORE</b> Baltimore Housing posts a "287 page list lots available, lots adopted, or lots available for projects, including urban farm leases"	Clarified on website: <ul style="list-style-type: none"> <li>list of lots: adopted vs. open, received a qualified community, managed open space rating, sites part of urban farm lease program</li> <li>online license application</li> <li>farmers 1 year of experience, 5 year lease \$100/yr/.</li> <li>links: rules on animals, zoning, build codes, resources</li> <li>Sell lot for 1S to land trust</li> </ul>		Required soil tests for a garden use permit - require soil safety plan.  City Depts. contribute mulch, equipment assistance. (This may have ended due to budget cuts. )  John Hopkins - interactive map history of sites, EPA conatimant-ed sites etc.	City partnered with Water Department: Growing Season flat rate: \$120 (March 30-Nov 1)  Online Application
<b>PITTSBURGH</b> Toolkit clearly defines process to access the 7,200 City-owned vacant lots for food, flower, and/or rain gardens.	Website: toolkit + required forms  Links: map of all vacant parcels managed by Lots to Love non-prof it partner ( public/private owned, historic maps and tips)	Commercial Genrial Liability Required  Cost kept low - shared policy under non-profits Grow Pittsburgh, NexTier Insurance	Required: Soil Test Right-Of-Entry Application - legal 1-day access to test soil on lot.  Required: lead tests, (other heavy metals recommended) results require different standards for food production. (mulch, raised beds)	Potential adopt-a- lot leader submit form/talk to PWSA to consider ease of watering lot in selection process.  OSS send site plan to PWSA set amount of h2o,P-WSA taps billed if oveer

### Review Best Practices:

- Precedents: Minneapolis, Baltimore, Pittsburgh, Milwaukee, Jersey City etc.

### Draft recommendations for CoA.

- Present to COO, Law Team, Equity Officer, City Departments
- Develop creative partnerships to overcome obstacles and address concerns.
- Gained approval to pilot
- Legislation passed
- Created AGAC to help create a clear, equitable and transparent application system.
- Tate map/tool
- Website

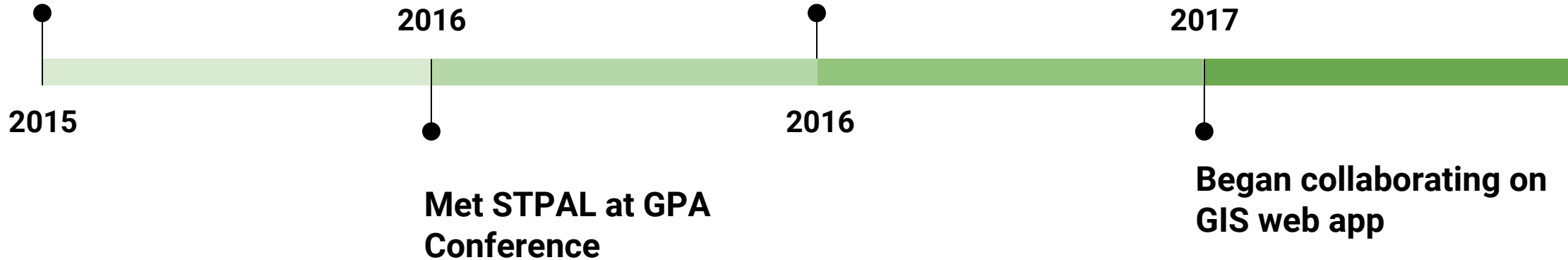
**AGLANTA** How: Integrating information into a user-friendly map + website

Elm Street  Gardens



Organic Farm Interest

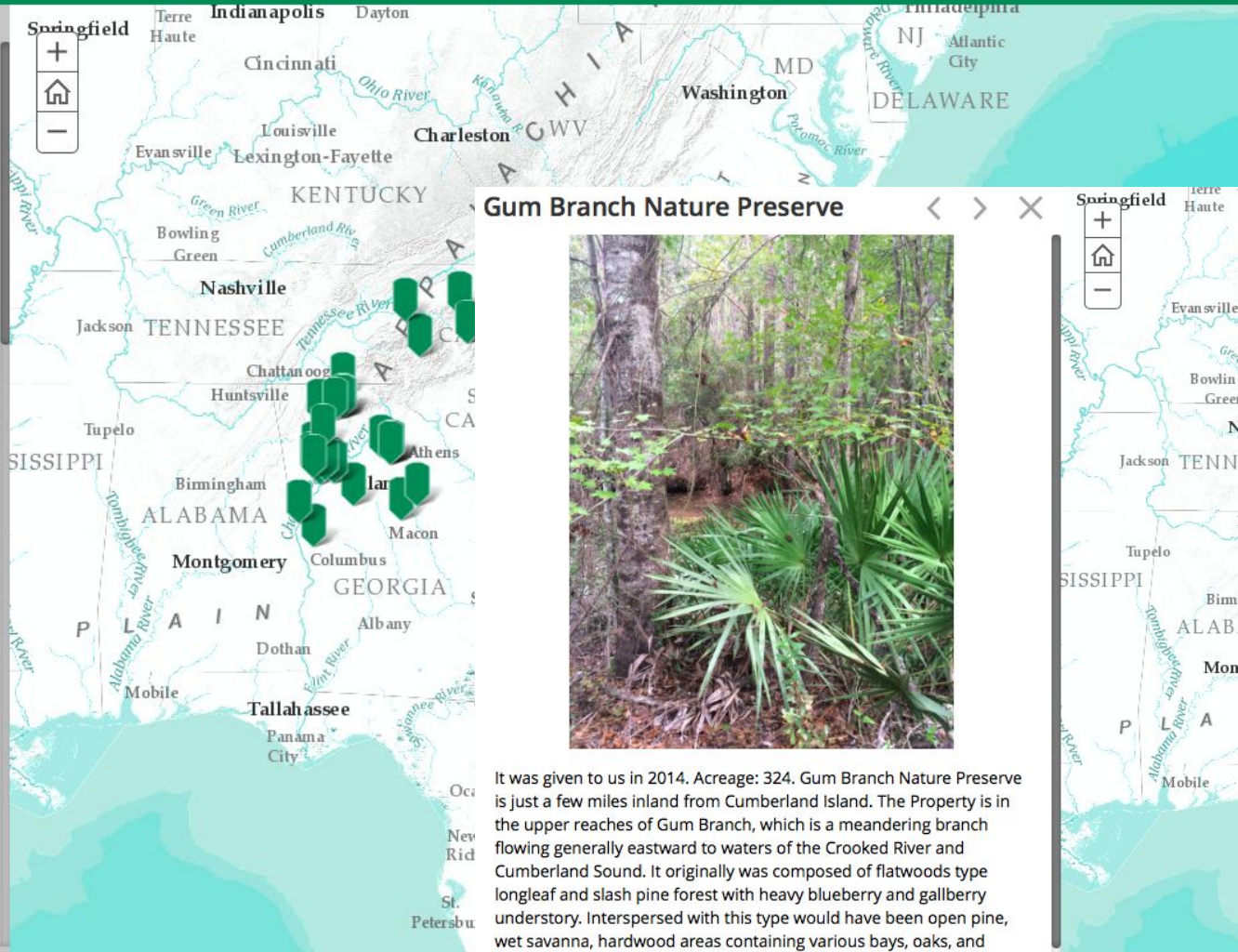
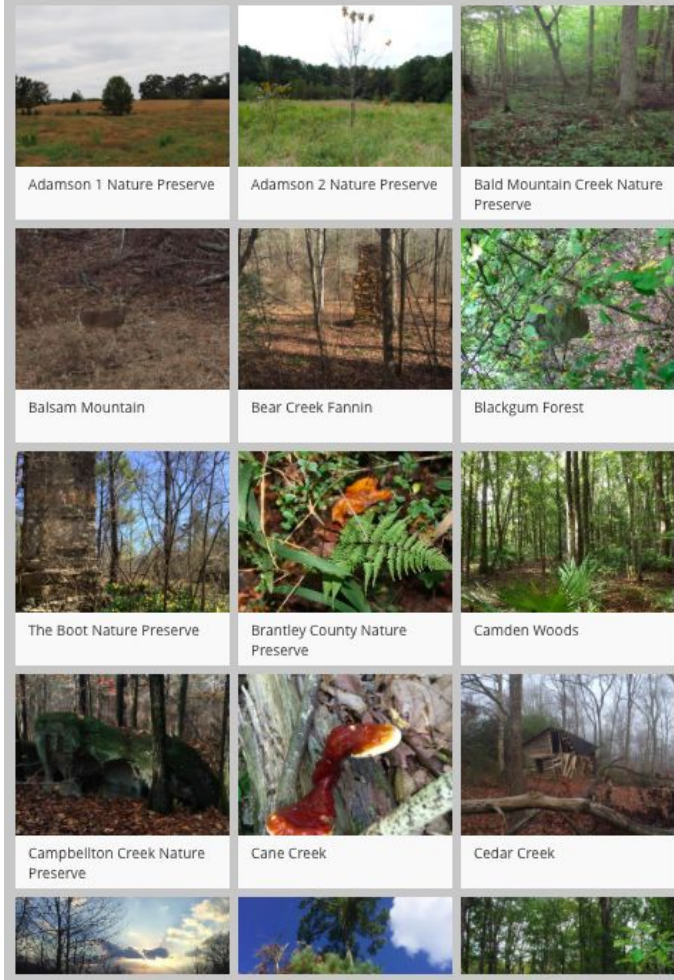
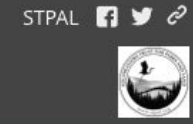
Connected with AgLanta



# AGLANTA How: Integrating information into a user-friendly map + website

## Southeastern Trust for Parks and Land

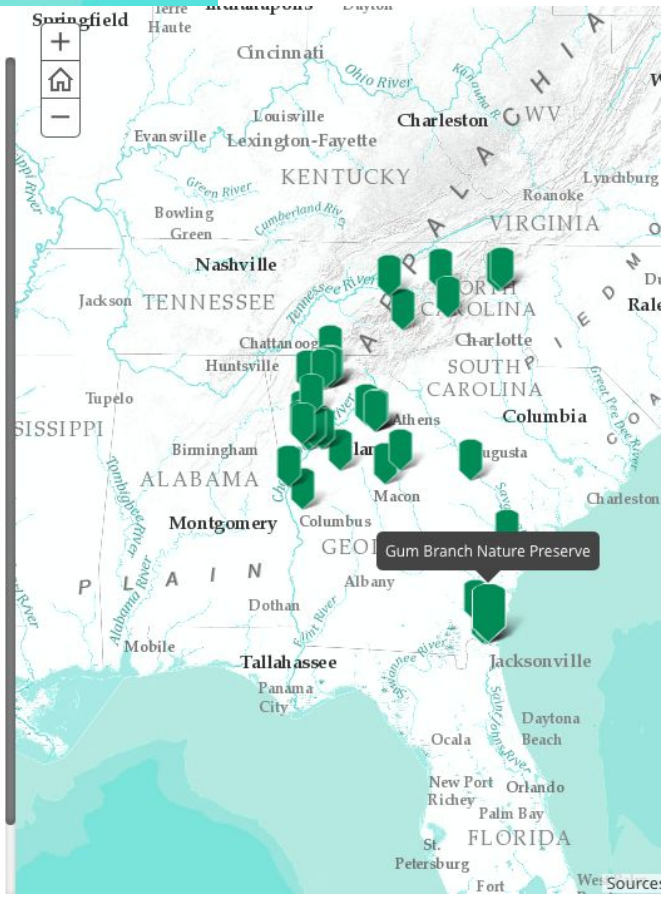
The Southeastern Trust for Parks and Land is an Accredited 501-C-3 land trust based in Cobb County, Georgia. We work for the preservation of natural land across the Southeastern United States and making it available for responsible use by our community.



### Gum Branch Nature Preserve



It was given to us in 2014. Acreage: 324. Gum Branch Nature Preserve is just a few miles inland from Cumberland Island. The Property is in the upper reaches of Gum Branch, which is a meandering branch flowing generally eastward to waters of the Crooked River and Cumberland Sound. It originally was composed of flatwoods type longleaf and slash pine forest with heavy blueberry and gallberry understory. Interspersed with this type would have been open pine, wet savanna, hardwood areas containing various bays, oaks, and gums, and stream side cypress, gum, oak, and maple swamp. It is currently in a condition consistent with its recent use as timber land. Restoring it to its native state is our primary objective. We are in the



# AGLANTA How: Integrating information into a user-friendly map + website

## Minneapolis Garden Lease Program

The City of Minneapolis provides opportunities for residents to lease vacant City-owned lots for community gardens and market gardens. **The map below shows which lots are currently available and leased. Lots currently available can be leased on a first come, first served basis for community gardens or market gardens.** The [garden lease process](#) provides information on the application process and what you will need to complete for each phase of the process. All gardens must submit a draft site plan before a lease will be processed. View a [sample site plan](#). Soil tests are currently in process for any lot that has not yet been tested. All gardens must comply with the [Pollinator Friendly City Policy](#).

\*If you are interested in applying for a lot, please complete and submit a [garden request form](#). Please send the completed form to Greg Simbeck at [Greg.Simbeck@minneapolismn.gov](mailto:Greg.Simbeck@minneapolismn.gov). For questions, contact Greg Simbeck at 612-673-3773.

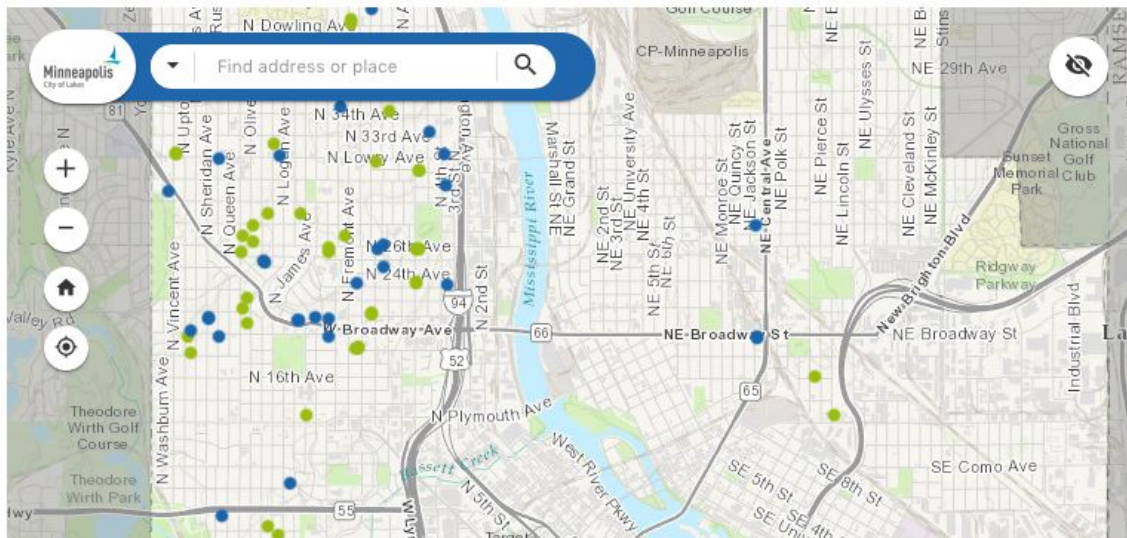
Garden	Administrative Fee	Lease Fee	Security Deposit	Total Annual Fee	Liability Insurance Coverage
Community Garden	\$50	\$1	\$0	\$51	\$1 million
Market Garden or Urban Farm	\$50	\$150	\$0	\$200	\$2 million

- Urban Farm Lease Program
- Tied to solving food desert in Atlanta
- Provide an interactive, online interface for farmers
- GIS based Web Application

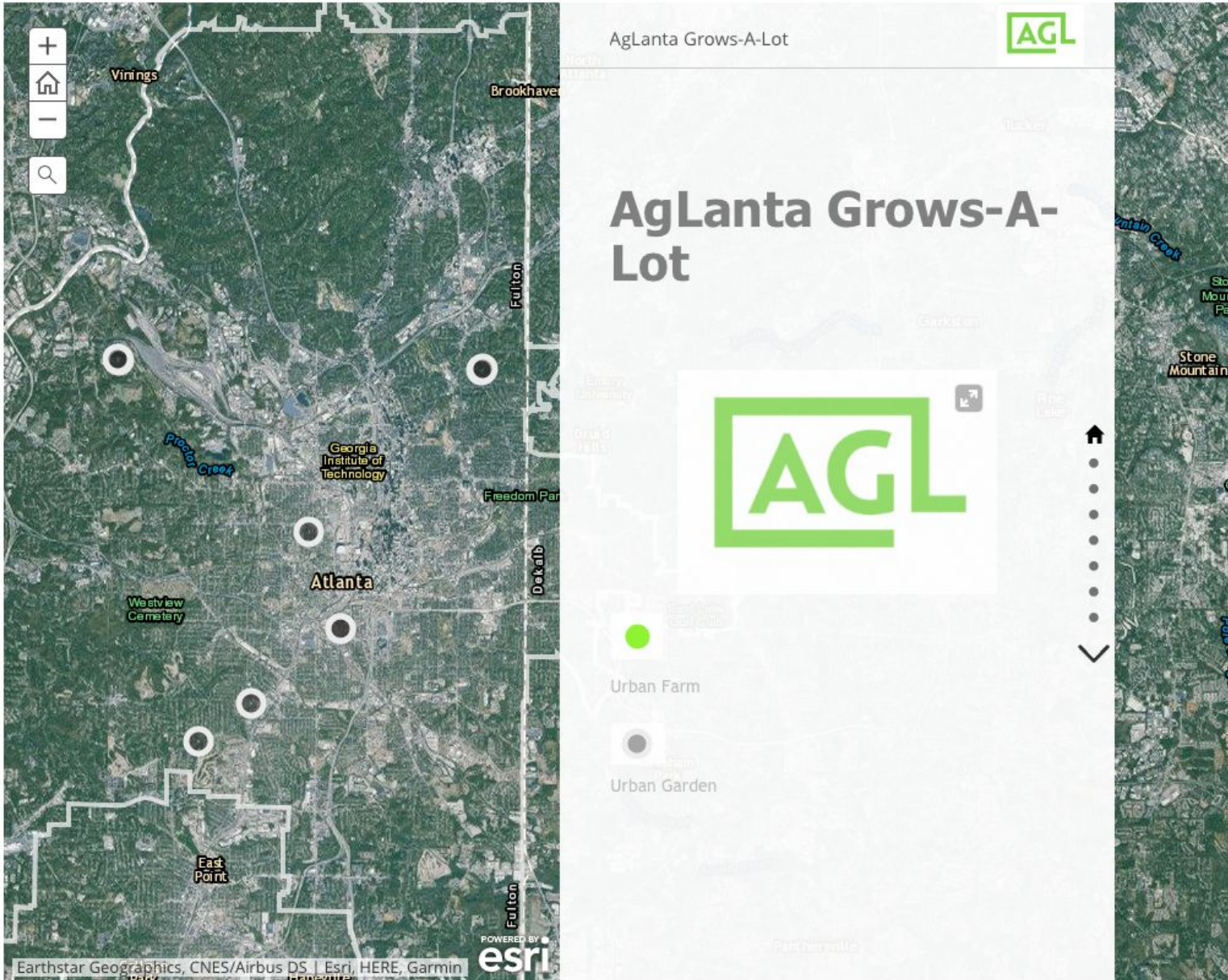
## Map of Community Gardens and Market Gardens

The map below shows vacant City-owned parcels that are currently available and leased for community gardens and market gardens. All lots have had soil tests conducted. Lots with soil tests showing toxins above accepted levels will be required to use raised beds for gardens.

Blue icons indicate parcels currently available for lease. Green icons indicate parcels currently leased. Click each icon for additional information about each parcel.



# AGLANTA How: Integrating information into a user-friendly map + website



- Summer 2017 Development
- October 2017 Launch

.....

[Aglanta Grows-A-Lot Website](#)

**AGLANTA GROWS-A-LOT**

[ABOUT AGLANTA GROWS-A-LOT](#)

[AGLANTA URBAN GARDENS](#)

[AGLANTA URBAN FARMS](#)

[AGLANTA GROWS-A-LOT DEFINITIONS](#)

[AGLANTA GROWS-A-LOT RESOURCES](#)

[AGLANTA GROWS-A-LOT ADOPTION CALENDAR](#)



**Goal:** Create a portal for Atlantans to identify, adopt, and transform vacant, underutilized properties in our city into community gardens & farms. In doing so create a healthier and more resilient city.



### AgLanta Grows:

- Improve AgLanta Grows-A-Lot system based on lessons learned during pilot. Add additional properties.
- Infrastructure, Insurance, Tool bank
- Community land trust
- Reporting and resources

- AgLanta Eats, AgLanta Renews....  
Food Oasis Map and Analysis
- AgLanta *integrated* into more departments, policies, plans (local and regional).
- Additional ideas?

# AGLANTA Questions and Answers



[www.aglanta.org](http://www.aglanta.org)

Elizabeth Beak  
Food System Planner  
Department of City Planning/OoR  
City of Atlanta  
[ebeak@atlantaGA.gov](mailto:ebeak@atlantaGA.gov)

Mario Cambardella  
Urban Agriculture Director  
Mayor's Office of Resilience  
City of Atlanta  
[mcambardella@atlantaGA.gov](mailto:mcambardella@atlantaGA.gov)

Tate Davis  
Georgia Tech  
Healthy Places Lab  
[tdavis@gatech.edu](mailto:tdavis@gatech.edu)

.....